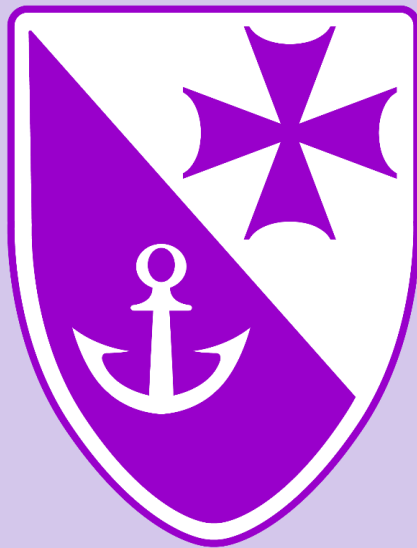


# Young Carer Policy

## 2025-2026



St Clement's and St John's Infant  
School

# Aims of young carer policy

- To improve the progress and raise the standard of achievement for young carers
- To support young carers in improving their attendance
- To ensure that young carers feel included and supported within their school community and that reasonable adjustments made to promote this
- To improve the wellbeing and self-worth of young carers in the school community
- To protect young carers from unjust treatment due to their caring role and improve co-ordination with other agencies and support services
- To give young carers a voice in the school community and involve them in decisions affecting young carer provision
- To ensure that staff recognise flexibility may be needed when responding to the needs of young carers
- To have accountable professionals to monitor young carer provision and support

## Definition of a young carer

Young carers are children under the age of 18 who help to look after someone in their home or another family member. This could be a sibling, parent, both parents or a grandparent who has a disability, illness, mental health condition or who misuses substances.

St Clement's and St John's Infant School's definition of a young carer is a child, under the age of 18, who is either the main carer, shares a caring responsibility for, or whose day-to-day life is impacted by someone in their home. Our definition also includes young adult carers (18 to 25 years old) who may operate within our sixth form.

Having a clear definition of the role of a young carer is important, but unfortunately, many will remain hidden from view due to stigma they may feel. To help identify and support those hidden young carers, it is vital that professionals are equipped with the understanding and knowledge to detect potential signs that a young person may have a caring responsibility.

## Safeguarding

St Clement's and St John's Infant School actively promotes the welfare and wellbeing of all pupils. Where appropriate, the school will refer a young carer to the local authority for a referral with permission of the parents/carers. The school will follow the school's safeguarding policy regarding any young carer at risk of significant harm due to inappropriate levels of caring.

# Policy Principle

At St Clement's and St John's Infant School, we acknowledge, recognise and value the caring responsibilities that pupils in our community have. As a school, we strive to raise the awareness of these young carers amongst staff and pupils, to provide effective support for our young carers and remove any barriers which could potentially inhibit their academic, social and personal development.

*"People don't realise that we don't have a choice." – BCP young carer, March 2023.*

We want young carers in our school to feel seen, feel heard and feel supported. By engaging with the Level Up Programme, we hope to improve the support in place for young carers which in the long-term, will have a positive impact on young carer's academic performance, attendance and aspirations. This policy outlines the whole school approaches and strategies that will enable young carers at St Clement's and St John's Infant School to flourish.

*"The session was the most living CPD I've ever experienced - I feel totally moved, inspired and determined to be part of the solution." – Dorset secondary school pastoral worker, November 2022.*

At St Clement's and St John's Infant School, we have high expectations of all pupils, and we believe all pupils should have equal opportunities. However, every child needs to feel safe, supported and understood to achieve self-actualisation. National statistics suggest that young carers do not always feel this way in school. A survey conducted by the Carer's Trust (2023) highlighted that over 42% of young carers 'always' or 'usually' feel stressed and 52% said they do 'not often' or 'never' get help from school or college to balance their work. We recognise that such caring responsibilities can, and will, have an impact on a child's social and emotional wellbeing and their academic performance. Therefore, we are committed to improving provision and support at St Clement's and St John's Infant School to enable young carers to fulfil their potential.

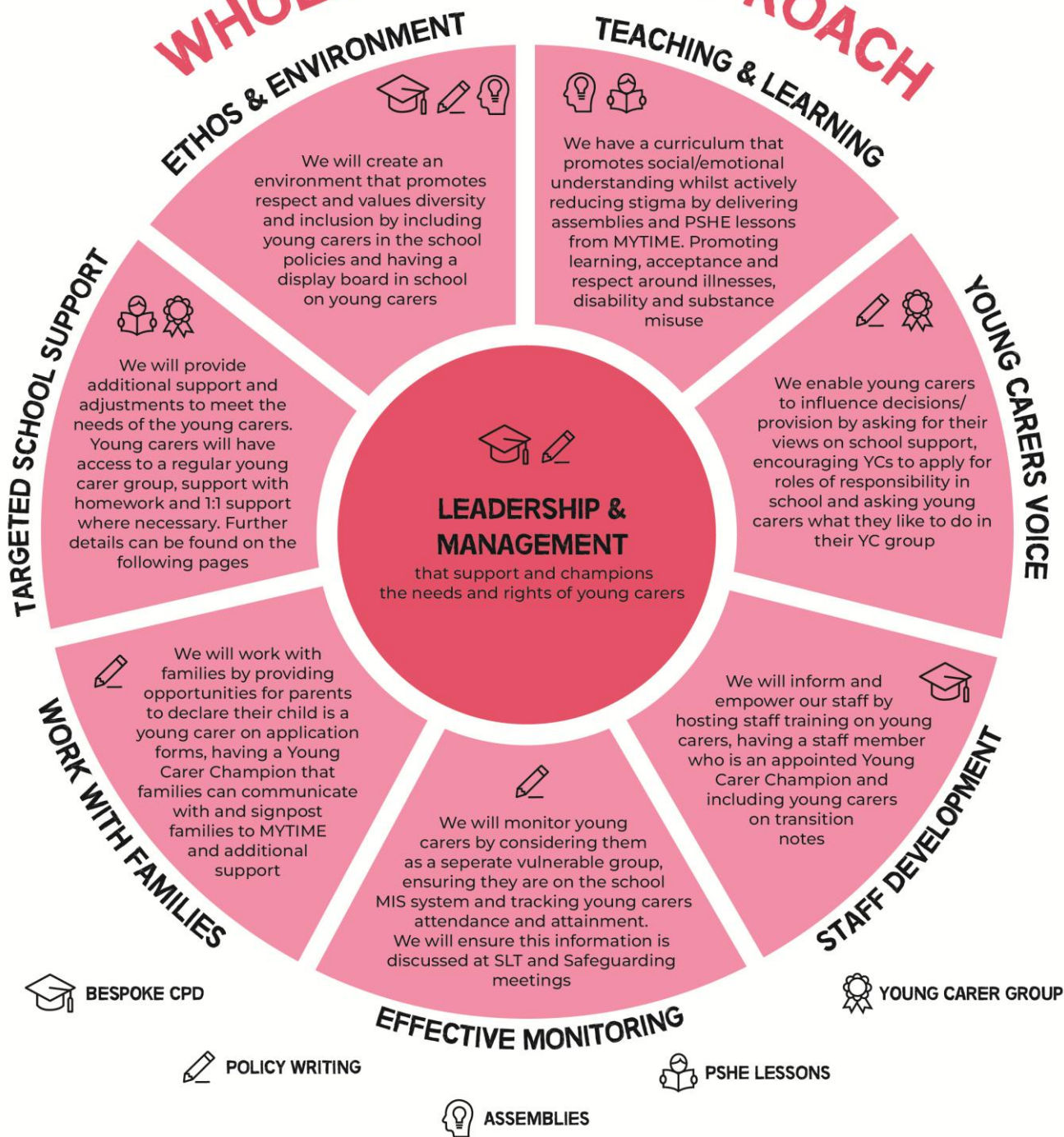
MYTIME Young Carer's data collected in March 2023 shows that after engagement with the Level Up Programme, over 85% of young carers had someone trusted to speak to, over 80% of young carers had a regular opportunity to meet other young carers and that they felt more positively about how their peers and school staff thought about and recognised young carers.

*"I like going to young carers group as I listen to other people's stories, and it makes me realise I'm not the only one going through it. It makes me feel less lonely." – Dorset primary young carer, March 2023.*

By working closely with MYTIME Young Carers, St Clement's and St John's Infant School will ensure that all stakeholders have a greater understanding of who young carers are, the challenges they face and how they will be supported. The whole school and classroom strategies are outlined in this policy, staff and students will be exposed to training and sessions to raise awareness. We will use the voices of the young carers in our school to shape the support available.

<sup>(1)</sup>Carers Trust (2023) *Being a young carer is not a choice. It's just what we do.*

# WHOLE SCHOOL APPROACH



PROVISION WILL BE HELD ACCOUNTABLE AND REVIEWED THROUGH ANNUAL POLICY REVIEW BY AN APPOINTED MEMBER OF SLT, GOVERNOR AND YOUNG CARER CHAMPION

MEMBER OF SENIOR LEADERSHIP TEAM

MEMBER OF GOVERNORS

YOUNG CARER CHAMPION

Lawrence Woodward

Johannes Radvan

Tanya Shenton

# Roles and responsibilities

## **Appointed Governor**

- ▷ Understand how policies and procedures support young carers
- ▷ Explore what training and development has been provided to the Champion and staff
- ▷ Know what information is shared with parents and externals on the support of young carers
- ▷ Hold senior leadership and Champion to the aims and objectives of the school's young carer action plan

## **Appointed member of Senior Leadership**

- ▷ Support YC Champion with implementing the action plan and strategy for young carers
- ▷ Support YC Champion with organising the delivery of the Level Up Programme and subsequent MYTIME offers
- ▷ Have overall responsibility for the provision and progress of young carers  
Provide data for the YC Champion and MYTIME at required points in the year

## **Young Carer Champion**

- ▷ Oversee the policy and provision for proactive identification of young carers
- ▷ Establish a first point of contact for young carers and their families, ensuring they understand how to self-identify and access support
- ▷ Ensure staff have a good understanding of who young carers are and the support available in school
- ▷ Ensure YCs are known and identifiable by all staff
- ▷ Ensure YC numbers are continuously reviewed, and this information is included in the school census
- ▷ Ensure YCs are supported appropriately by communicating with the young carer, their family and their teachers
- ▷ Ensure the curriculum promotes a full understanding of the role young carers play in their home, whilst actively reducing stigma
- ▷ Provide opportunities for 1:1 support and YC groups, building a community of young carers
- ▷ Create a clear line of communication for young carers to access support
- ▷ Report of the strengths, weaknesses, and recommendations to SLT to improve support for young carers
- ▷ Create annual action plans for young carer provision, with the support of MYTIME
- ▷ Identify barriers to achievement, through conversations and data monitoring, and build provision to combat these
- ▷ Keep up to date with local and national developments
- ▷ Oversee transition between phases of education
- ▷ To communicate with MYTIME to support them in the development of the Level Up programme, with the goal to build strong young carer provision across Dorset

# Our support and adjustment for our Young Carers:

**There is a dedicated Young Carer Champion (Tanya Shenton) who supports young carers. Young carers can speak to the champion at St Clement's and St John's Infant School. Karen Rendell is supporting the group as well.**

If a young carer has incorrect or missing uniform, we will:

- *Provide them with access to spare uniform discreetly*

If a young carer is falling behind their peers academically, we will:

- *Put reading and/or maths interventions in place*

If the person a young carer cares for is critically unwell, we will:

- *Inform staff working with that YC of the situation*
- *Provide opportunities for the young carer to communicate with that person from the office phone.*

If a young carer is struggling with attendance, we will:

- *Have open conversations with families around barriers to attendance/punctuality*
- *Put in support to overcome the barriers discussed. For example, access to the car park for drop off.*

If a young carer is struggling to complete their reading at home, we will:

- *Provide opportunities for the young carer to read at school*
- *Be understanding of the challenges at home preventing this*

All staff will know who the young carers they work with are by:

- *Including YCs on class information packs*
- *Central list for all staff to access*

To support young carers with their mental health, we will:

- *Provide a space (Nurture Room) for them to attend when required.*
- *Include mindful activities in young carer groups*
- *Invite parents in for termly coffee mornings to support them.*

To allow a young carer to connect with other young carers, we will:

- *Run a regular YC group at school*
- *Bring young carers on a MYTIME school event*
- *Share information about MYTIME Zoom Youth Group and Making Memories holiday events*